

SPLIT SLEEVE REPAIR CLAMPS

PRODUCT GROUP MORGRIP CLAMPS & CONNECTORS



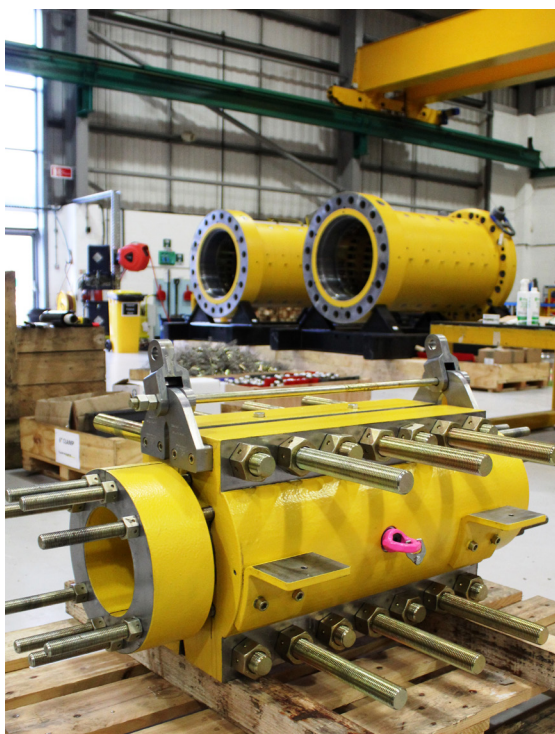
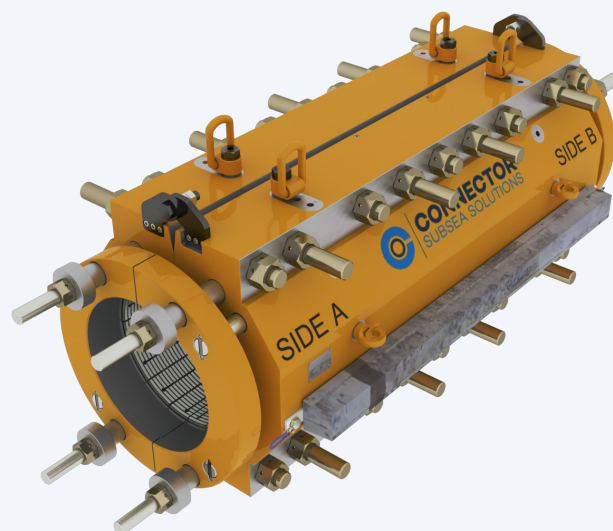
PRODUCT DESCRIPTION

MORGRIP Split sleeve repair clamps are manufactured in two halves so the clamp can fit round the repair location without needing to cut the pipe.

The sealing arrangement provides full containment around the damaged section of pipe (leak sealing only). If required, we can design the clamp to have a gripping section to provide a fully permanent structural repair that can be DNV Product Certified.

Our clamps are application specific and designed, forged and fabricated to the exact requirements of the operator and repair location. This bespoke service ensures a fully configurable solution of the highest quality.

Suitable for onshore, topside, diver installed or deepwater remote repair, our engineered MORGRIP clamps provide an increased level of safety and reassurance when repairing critical pipelines or being stored as part of an emergency pipeline repair system or contingency plan.



01 // Workshop assembly

CAPACITIES

Pipeline size	1/2in to 42in
Material	Carbon steels, stainless steels, duplex steels
Temperature	-40degC to 250degC
Working Pressure	Up to and including ANSI 2500 rating (638bar test pressure)
Installation	Diver installed, WROV or fully remote

For applications outside of this scope, bespoke engineered solutions are available.

INTERFACES

Activation	Bolt tensioners or patented C-bar system
Seal Material	Elastomeric or graphite
Gripping Capacity	Optional - Collet
Back Seal Pressure Test	Yes
Installation	Rigging or subsea deployment frame



CONNECTOR SUBSEA SOLUTIONS

Head office:

Kokstadflaten 17, 5257 Kokstad, Norway

Locations in:

Brazil, UK, Croatia & Bosnia

www.connectorsubsea.com // mail@connectorsubsea.com

+47 99 70 11 11 // [in](https://www.linkedin.com/company/connector-subsea-solutions) connector-subsea-solutions

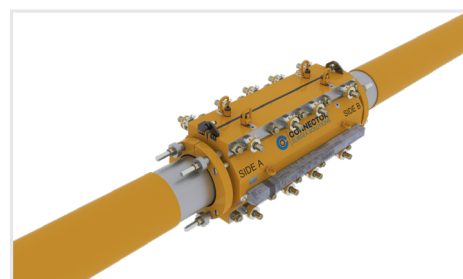
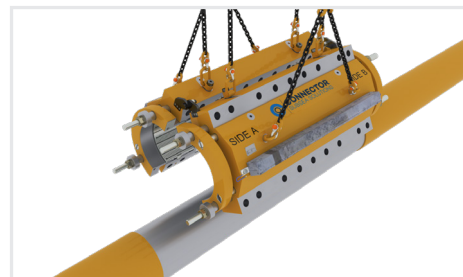
SPLIT SLEEVE REPAIR CLAMPS

MORGRIP CLAMPS & CONNECTORS

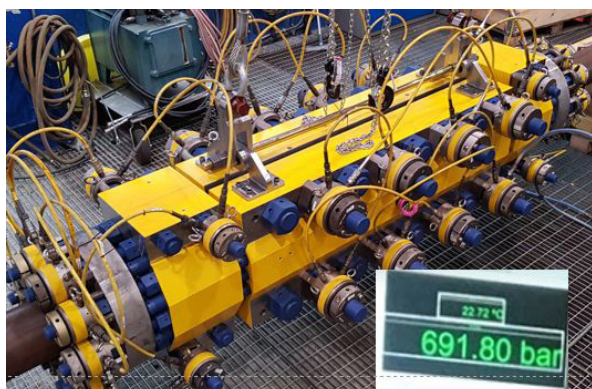


ADDITIONAL INFO

Design code	DNVGL-ST-F101/ F113 Pipeline Repair PED compliance up to CAT III ASME BPVC VIII Div. 1 ASME B31.3 API 5L Linepipe specification ASME BPVC VIII Div.2 on request
Coating	NORSOK M-501 System 7C & 7B Compliant
Maintenance	Not required post installation
Packing	Wooden shipping crates or steel frames



02 // Clamp and remote installation frame for deepwater application



03 // Factory acceptance testing



04 // Clamp with deployment frame



CONNECTOR SUBSEA SOLUTIONS

Head office:

Kokstadflaten 17, 5257 Kokstad, Norway

Locations in:

Brazil, UK, Croatia & Bosnia

www.connectorsubsea.com // mail@connectorsubsea.com

+47 99 70 11 11 // [in](https://www.linkedin.com/company/connector-subsea-solutions) connector-subsea-solutions