



# SUBSEA DISTRIBUTION

COMPLEX CHALLENGES  
**RELIABLE SOLUTIONS**

[www.connectorsubsea.com](http://www.connectorsubsea.com)



## WHO ARE WE

- Offices in Norway, UK, Croatia, Bosnia and Brazil
- 3,000sqm UK facilities and 4,000sqm Norway facilities
- 125+ dedicated employees
- Global agent network
- Complete Deepwater Tie-In and Pipeline Repair Solutions
- MORGRIP® Mechanical Pipeline Connectors since 1987
- Remote Subsea Pipeline Welding since 1995
- Subsea Distribution systems since 2011

## OUR EXPERIENCE

Our Subsea Distribution experts have over time been exposed to operational challenges seen in subsea hydraulics and hydrocarbon applications.

With those experiences in mind, we have developed an all-encompassing subsea distribution product range for increased reliability and safety.

# OUR SOLUTION PORTFOLIO

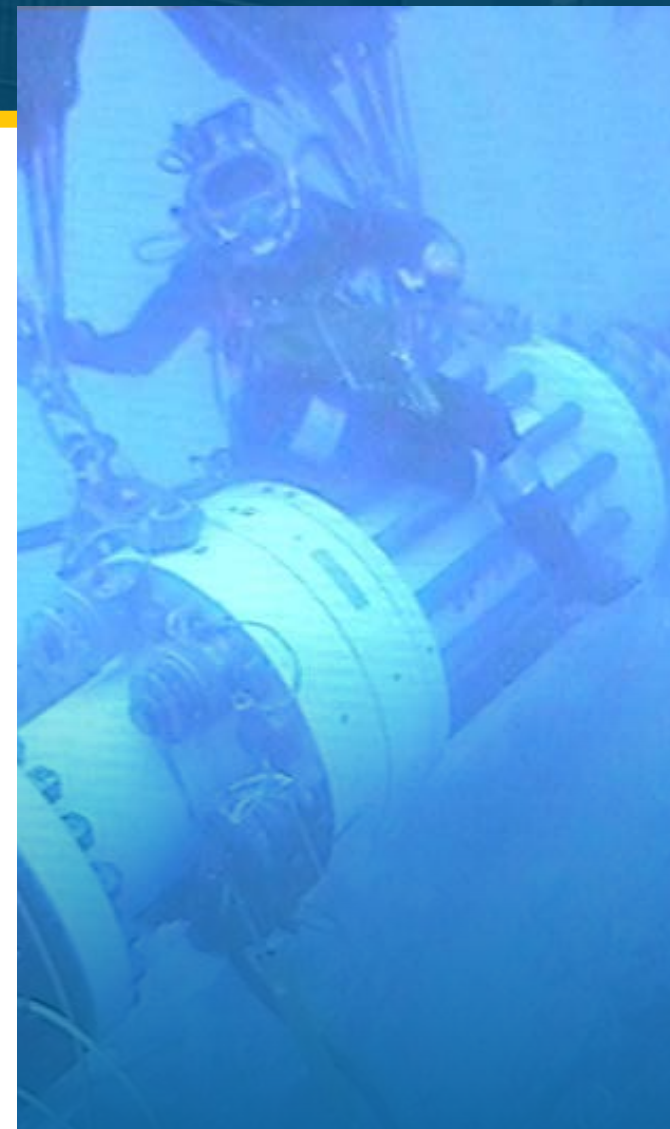
We have a field-proven track record in all of the following business areas:



## SUBSEA DISTRIBUTION PORTFOLIO

- Couplers
- ROV Connectors
- MQC Stab Plates
- Ball Valves
- Flying Leads & Ancillaries

[LEARN MORE](#)



## DIVER-ASSISTED REPAIR

MORGRIP connectors and clamps to suit all applications

Supporting equipment to ensure successful installation



## REMOTE & DEEPWATER REPAIR

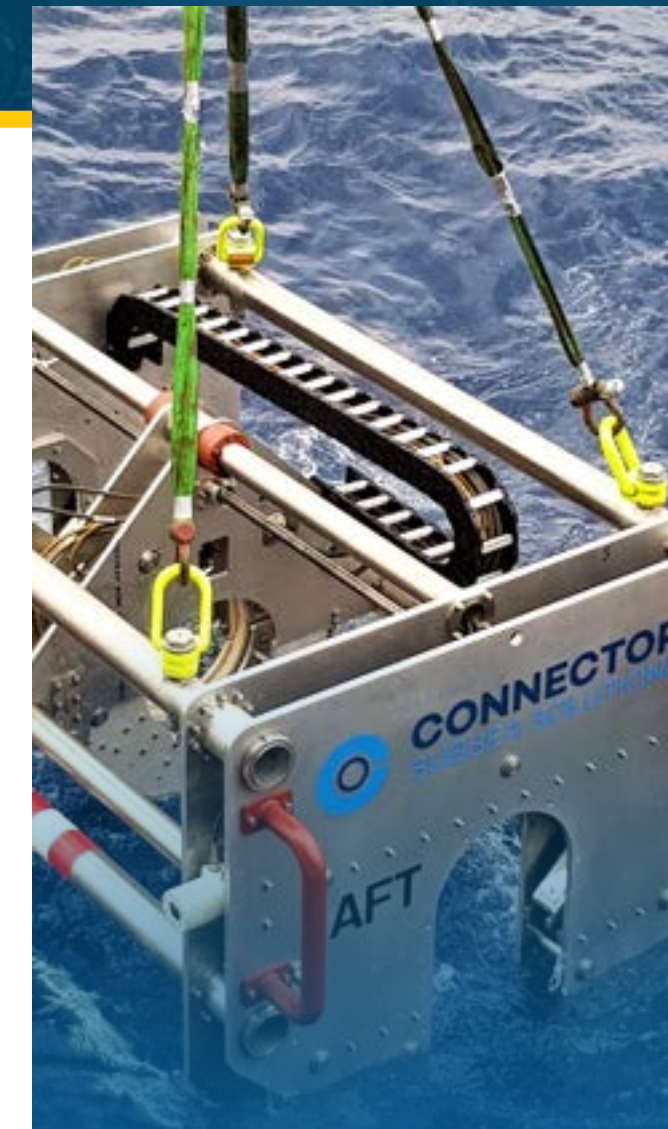
Remote MORGRIP Pipeline connectors & clamps

Complete with all installation equipment & tooling



## SPECIAL SOLUTIONS

- Remote MORGRIP Pipe CRA Pipeline Repair
- Pipe-in-pipe Repair
- Elbow Clamps
- Conductor Repair
- Holdback Clamps
- Customer driven solutions



## RENTAL SUITE – TIE-IN & REPAIR

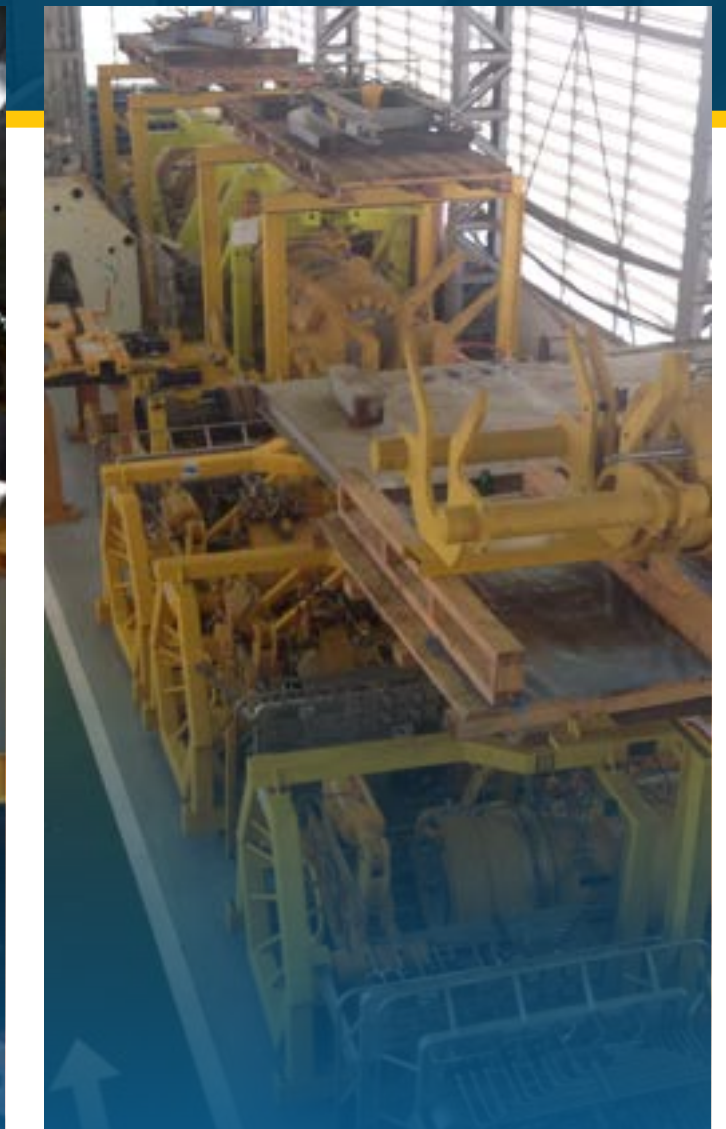
- Pipe Lift & Handling
- Coating & Weld seam Removal
- Cutting and End prep
- Connector & Clamp installation frames
- Riser Cleaning & Inspection Tool



## FULLY REMOTE SUBSEA WELDING SYSTEMS

Worlds only field-proven system for remote welding for Pipeline tie-in and Repair

Power Converters & Control Systems



## EMERGENCY PIPELINE REPAIR SYSTEMS & CLUB

- EPRS Club
- Equipment Maintenance and Storage
- Personnel
- Contingency
- Procedures
- Preparedness



# SUBSEA DISTRIBUTION PRODUCTS

**We provide fully integrated solutions for subsea distribution systems**

Optimised for high flow and high pressure, we have implemented a modular design philosophy that enables a higher level of component standardisation throughout our product line.

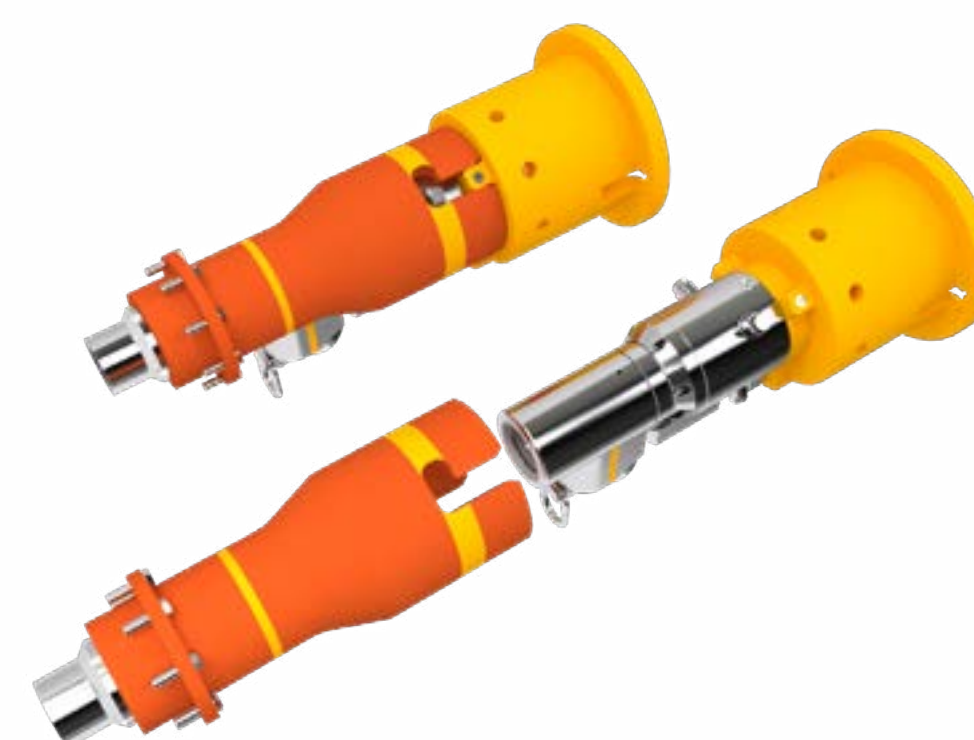
This approach reduces manufacturing cost and accelerates production while enabling increased flexibility and competitiveness in our delivery stream.



**Hydraulic &  
Chemical Couplers**



**MQC ROV Stab Plates &  
Flying Lead Bundles**



**Heavy Duty (HD) ROV  
Connectors**



**Medium Duty (MD) ROV  
Connectors**



**Small Bore Ball Valves**

# HYDRAULIC & CHEMICAL COUPLERS

## HYDRAULIC & CHEMICAL COUPLERS

MQC ROV STAB PLATES & FLYING LEAD BUNDLES

SINGLE BORE ROV CONNECTORS

SMALL BORE BALL VALVES



## TECHNICAL FEATURES & OPERATIONAL DIFFERENTIATORS

- High internal flow and low separation forces
- Modular sealing cartridge for all relevant sealing elements and compounds
- Electron beam welded body reduces leak paths and allows high quality volume production

## COMMERCIAL BENEFITS

- Easy to integrate with a wide variety of market MQC Stab Plate designs
- Male / female internally identical, enabling stocking capabilities, reducing cost and lead times
- All project parameters taken care of in standard sealing systems and cartridge

## DESIGN BASIS - HYDRAULIC & CHEMICAL COUPLERS

- |                                |                                           |
|--------------------------------|-------------------------------------------|
| • Working Pressure:            | 5,000 PSI - 15,000 PSI                    |
| • Operating Temperature:       | -18°C to +121°C                           |
| • Maximum Water Depth:         | 3,000m                                    |
| • Design Codes:                | API 6A (ISO 10423), API 17D (ISO 13628-4) |
| • Product Specification Level: | PSL 3 / PSL 3G                            |

# MQC ROV STAB PLATES & FLYING LEAD BUNDLES

HYDRAULIC & CHEMICAL COUPLERS

MQC ROV STAB PLATES & FLYING LEAD BUNDLES

SINGLE BORE ROV CONNECTORS

SMALL BORE BALL VALVES



## TECHNICAL FEATURES & OPERATIONAL DIFFERENTIATORS

- Compact locking mechanism simplifies tubing routing
- Simple secondary locking mechanism
- + / - 30 deg misalignment capacity

## COMMERCIAL BENEFITS

- Reduced vessel time through easy, safe and reliable operation
- We offer turn-key flying leads which reduces risk and 3rd party integration cost
- Standardised components reduce cost and lead time

## DESIGN BASIS - MQC & HFLS

- |                                |                                           |
|--------------------------------|-------------------------------------------|
| • Working Pressure:            | 5,000 PSI - 15,000 PSI                    |
| • Operating Temperature:       | -18°C to +121°C                           |
| • Maximum Water Depth:         | 3,000m                                    |
| • Design Codes:                | API 6A (ISO 10423), API 17D (ISO 13628-4) |
| • Product Specification Level: | PSL 3 / PSL 3G                            |

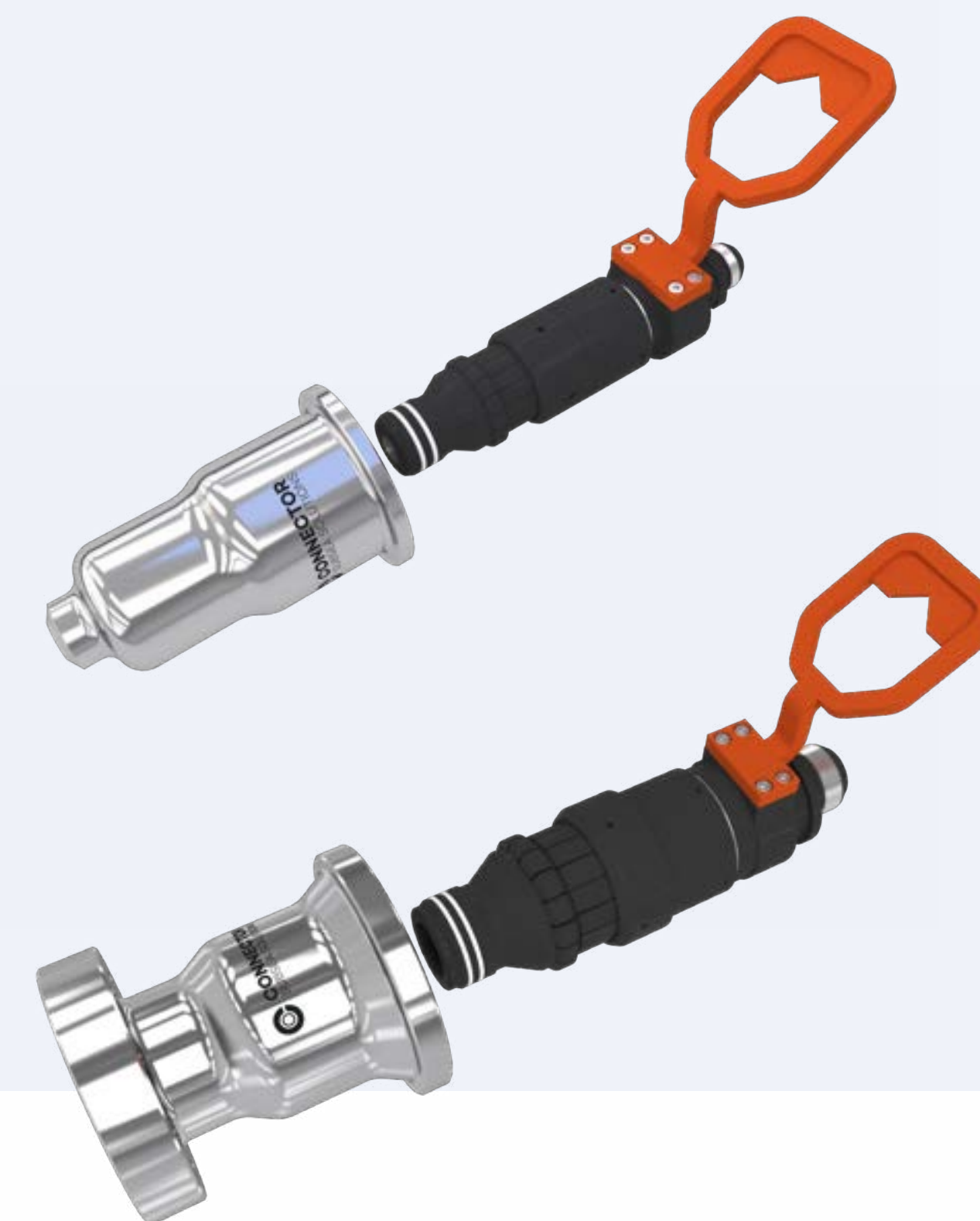
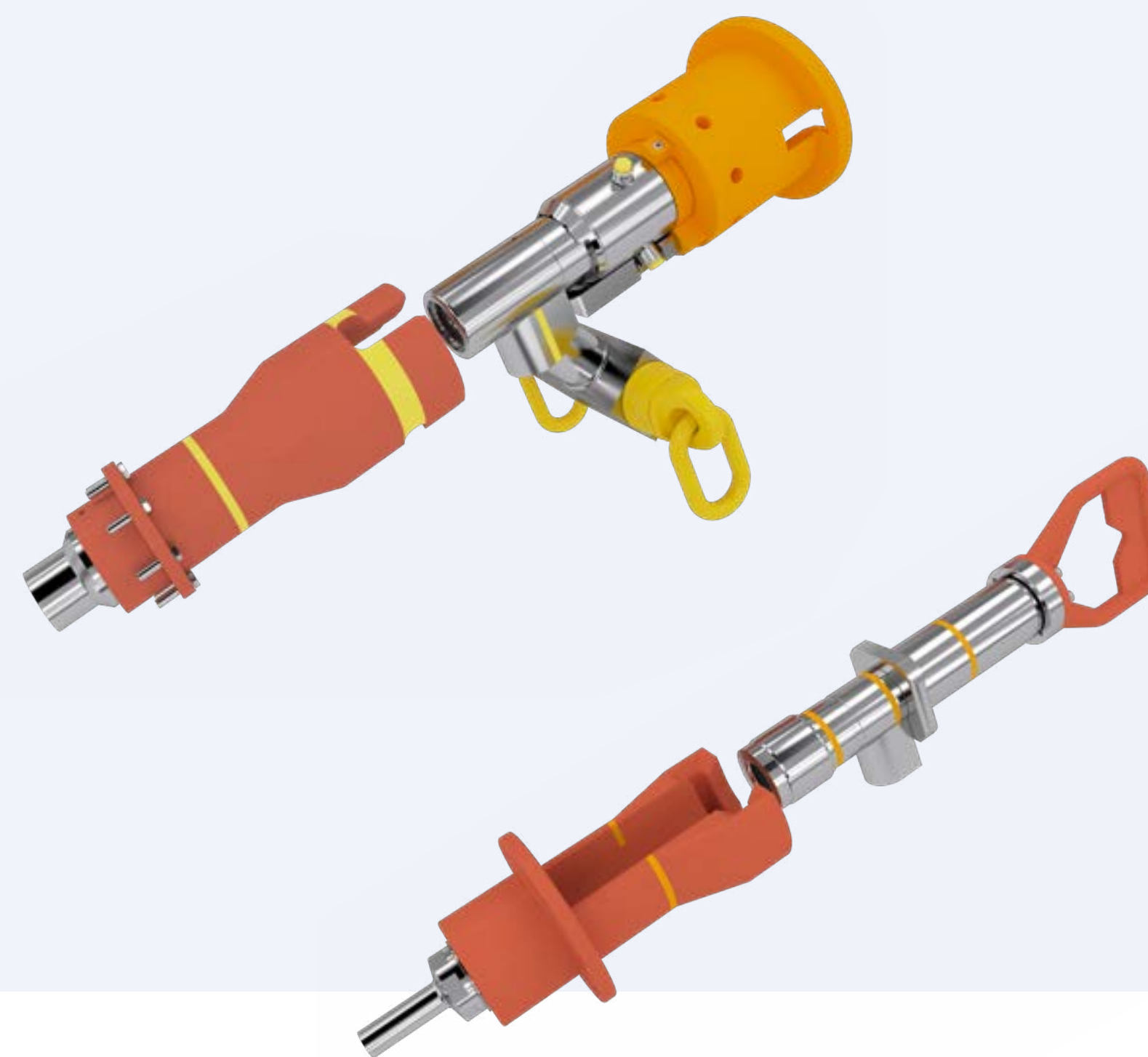
# SINGLE BORE ROV CONNECTORS

HYDRAULIC & CHEMICAL COUPLERS

MQC ROV STAB PLATES & FLYING LEAD BUNDLES

**SINGLE BORE ROV CONNECTORS**

SMALL BORE BALL VALVES



## TECHNICAL FEATURES & OPERATIONAL DIFFERENTIATORS

- High internal flow due to full bore sizes
- Modular design for interchangeability of size (MD) and lifting arrangements (HD)
- Compact connectors for easy deck handling and hook-up

## COMMERCIAL BENEFITS

- Low component count and machining enables significant cost savings
- Increased operational reliability compared to competition
- Inboard isolation valve can be integrated to deliver a cost and space optimised solution

## DESIGN BASIS - SINGLE BORE ROV CONNECTORS

- Working Pressure:  
5,000 PSI - 15,000 PSI
- Bore Sizes:  
HD: 1.5" to 3"  
MD: ¼" to 1"  
Soft Seal: 1" to 3"
- Operating Temperature:  
-18°C to +121°C
- Maximum Water Depth:  
3,000m
- Design Codes:  
API 6A (ISO 10423), API 17D (ISO 13628-4)
- Product Specification Level:  
PSL 3 / PSL 3G

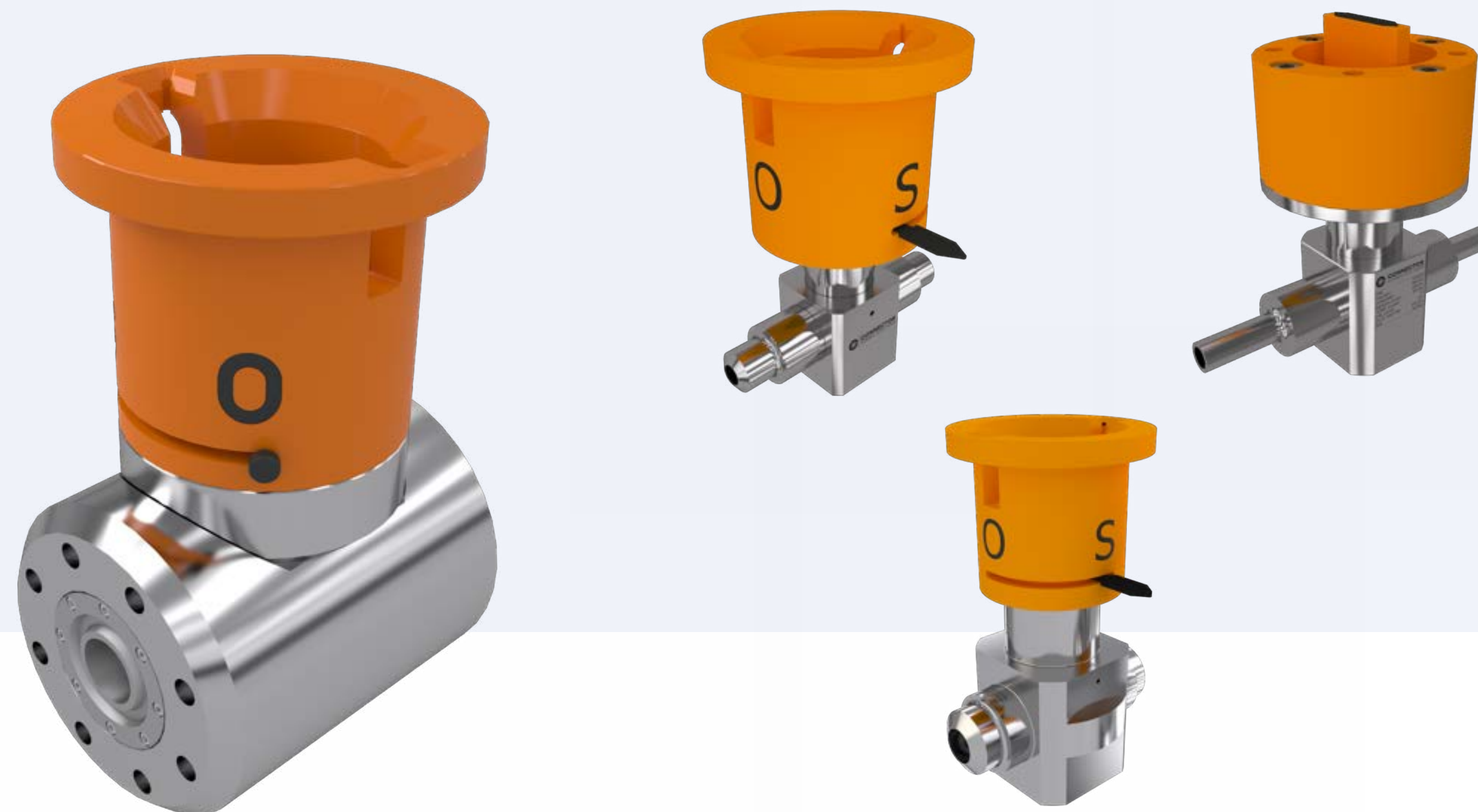
# SMALL BORE BALL VALVES

HYDRAULIC & CHEMICAL COUPLERS

MQC ROV STAB PLATES & FLYING LEAD BUNDLES

SINGLE BORE ROV CONNECTORS

**SMALL BORE BALL VALVES**



## TECHNICAL FEATURES & OPERATIONAL DIFFERENTIATORS

- Entire portfolio qualified to highest of industry standards and requirements
- Both MTM and soft seal available for ½", 1" and 2" in various pressure classes
- Electron beam welded body for high volume production and quality control

## COMMERCIAL BENEFITS

- Interchangeable ball and seats for MTM and soft seat valves
- Reduced material use and machining time due to compact design
- Reduced size and standardisation of components gives market leading prices

## DESIGN BASIS - SMALL BORE BALL VALVES

- |                                |                                                      |
|--------------------------------|------------------------------------------------------|
| • Working Pressure:            | 5,000 PSI - 15,000 PSI                               |
| • Operating Temperature:       | -29°C to +145°C                                      |
| • Maximum Water Depth:         | 3,030m                                               |
| • Design Codes:                | API 6A (ISO 10423), API 17D (ISO 13628-4)<br>TR 1234 |
| • Product Specification Level: | PSL 3 / PSL 3G                                       |
| • Qualification Level:         | API 6A (ISO 10423) / API 17D (ISO 13628-4)           |



## CONTACT US

---

### Connector Subsea Distribution

[sales.csd@connectorsubsea.com](mailto:sales.csd@connectorsubsea.com)

Bleivassvegen 28

5347 Ågotnes, Norway

### Kristian Karlsen

Senior Technical Sales Engineer

[kristian.karlsen@connectorsubsea.com](mailto:kristian.karlsen@connectorsubsea.com)

### Robert Kamperin

Marketing & Business Development  
Manager

[robert.kamperin@connectorsubsea.com](mailto:robert.kamperin@connectorsubsea.com)

### Derek Mason

Sales Manager

[derek.mason@connectorsubsea.com](mailto:derek.mason@connectorsubsea.com)

For more info, visit [www.connectorsubsea.com](http://www.connectorsubsea.com)

 **Follow Connector Subsea Solutions** on LinkedIn to keep updated on all our latest activity