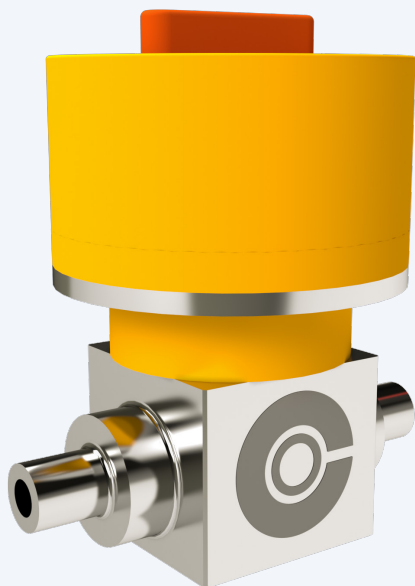


# SMALL BORE BALL VALVES

PRODUCT GROUP  
SUBSEA DISTRIBUTION



## PRODUCT DESCRIPTION

Our ball valves, for ½" to 2" high pressure control systems, are a form of quarter-turn valve which uses a pivoting perforated ball to control flow.

Implementing a unique manufacturing process we are able to weld rather than bolt the components. Not only does this considerably increase the quality and reliability of each unit, but it also significantly reduces the size and weight up to 70% of industry alternatives.

With flexible, modular and interchangeable sealing options we can supply competitive solutions from hydraulic valves to high performance gas applications.

Fully qualified to PSL 3 / 3G, this lightweight and compact solution provides the highest level of safety and assurance, reducing operational risk and cost.

## CAPACITIES

|   |                           |
|---|---------------------------|
| Pipeline size   | ½" – 2"                   |
| Maximum working pressure                                    | Up to 15,000psi           |
| Operating Temperature                                       | -18/ +121 C               |
| Ball Valve Opening position/<br>rotation angle (full open): | 90 degree in CW direction |
| Water depth (m)   | 3000 m                    |

## DIMENSIONS & WEIGHT

|           |                                       |
|-----------|---------------------------------------|
| Tool Mass | ½" - 5 kg<br>1" - 30 kg<br>2" - 70 kg |
|-----------|---------------------------------------|



## SMALL BORE BALL VALVES

SUBSEA DISTRIBUTION

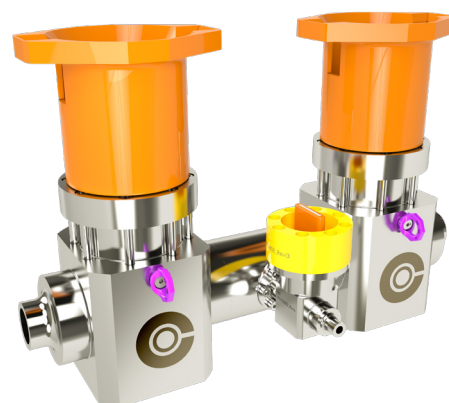


### INTERFACES

|                            | ½"      | 1"                       | 2"               |
|----------------------------|---------|--------------------------|------------------|
| <b>Operational Torque:</b> | 55 Nm   | 230 Nm                   | 1100 Nm          |
| <b>Maximum Torque:</b>     | 212 Nm  | 550 Nm                   | 3600 Nm          |
| <b>ROV Interface:</b>      | ROV Arm | ROV Class 2, 3 or 4 tool | ROV Class 4 tool |

### ADDITIONAL INFORMATION

|                                    |   |
|------------------------------------|---|
| <b>Design codes</b>                | API 6A, API 17D   |
| <b>Product Specification Level</b> | PSL 3 / 3G (API 6A)   |
| <b>Ball Valve Material</b>         | UNS S32750, Nitronic 50 HS  |
| <b>Flexible Sealing Solutions:</b> | Chevron stack/PEEK (PSL 3),<br>Chevron stack /metal-to-metal (PSL 3G) |



## ABOUT CONNECTOR SUBSEA SOLUTIONS

 COMPLEX CHALLENGES **RELIABLE SOLUTIONS**

Connector Subsea Solutions (CSS) is a technology leading engineering business with a large a portfolio of products and equipment to provide solutions to the Offshore Oil & Gas industry. Since 2000, CSS has supplied novel, reliable and cost-effective solutions for subsea and deepwater projects and has a proven track record from some of the world's most demanding subsea environments.

**OUR RANGE OF SOLUTIONS HAVE BEEN DEVELOPED FROM GROUND UP FOR ROBUST OPERATIONS, AND ARE CHARACTERIZED BY:**

- ▶ Lightweight and small footprint
- ▶ Innovative – simple operation, robust and reliable
- ▶ Unique track record for both riser and pipeline repair and tie-in operations


**CONNECTOR SUBSEA SOLUTIONS**

 Head office: Kokstadflaten 17, 5257 Kokstad, Norway  
 Locations in: Brazil, UK, Croatia & Bosnia

[www.connectorsubsea.com](http://www.connectorsubsea.com) // [mail@connectorsubsea.com](mailto:mail@connectorsubsea.com)

 +47 99 70 11 11 // [in](https://www.linkedin.com/company/connector-subsea-solutions) connector-subsea-solutions