

# PIPELINE LIFTING & HANDLING FRAME

## PRODUCT GROUP

## PIPELINE REPAIR & TIE-IN



### PRODUCT DESCRIPTION

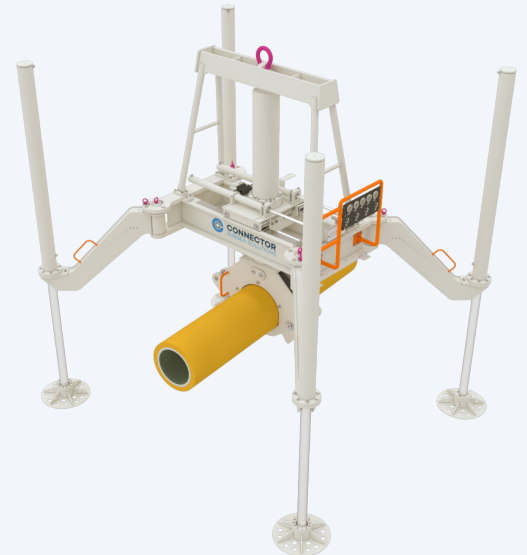
Pipeline Lifting & Handling Frames facilitate inspection, free span correction, maintenance and repair of subsea pipelines.

Incorporating a modular foot design for multiple seabed conditions and independent leg length configuration, the frame can provide secure, stable and controlled interface with the pipeline, regardless of the location, water depth or sea current.

Light weight and easy to handle, the entire Pipeline Lifting & Handling Frame can fold and pack into a standard 10ft shipping container. This makes it an applicable option regardless of vessel size or location.

With over 1000 subsea operations completed these tools are proven to be both robust and reliable, while also providing an increased level of safety and control when manipulating subsea pipelines.

These tools are available to rent as standard units or can be sold as bespoke engineered solutions to your specific application requirements.

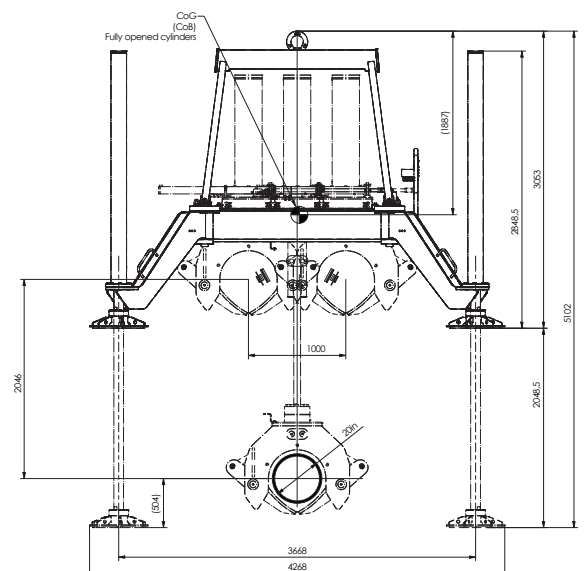


### CAPACITIES

<b>Pipeline size</b>	4-20 in
<b>Lifting capacity (SWL)</b>	25 t
<b>Lifting height</b>	2100 mm
<b>Reach below seabed</b>	2000 mm
<b>Transversal travel</b>	± 500 mm (from centre)
<b>Allowable slope for operation</b>	15 deg
<b>Water depth (m)</b>	3000 m

### DIMENSIONS & WEIGHT

<b>Unfolded dimensions (HxWxD)</b>	2900 x 4268 x 5102mm
<b>Folded dimensions (HxWxD)</b>	2900 x 2352 x 3053mm
<b>Mass of tool</b>	5000 kg
<b>Weight of tool in air</b>	49 050 N (5000 kgf)
<b>Weight of tool in water</b>	42 674 N (4350 kgf)



#### CONNECTOR SUBSEA SOLUTIONS

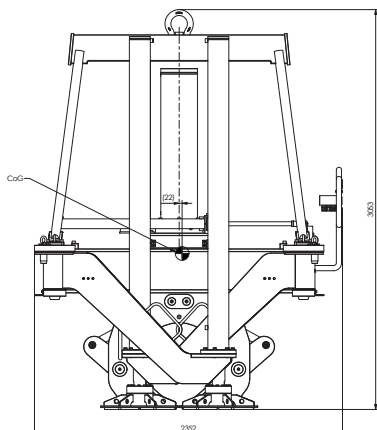
Head office: Kokstadflaten 17, 5257 Kokstad, Norway  
 Locations in: Brazil, UK, Croatia & Bosnia

[www.connectorsubsea.com](http://www.connectorsubsea.com) // [mail@connectorsubsea.com](mailto:mail@connectorsubsea.com)

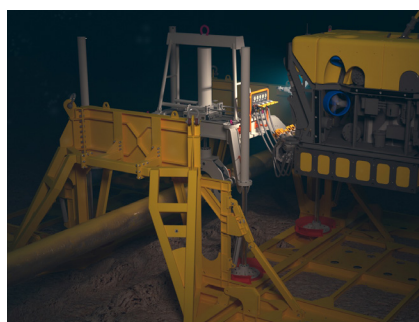
+47 99 70 11 11 // [in](https://www.linkedin.com/company/connector-subsea-solutions) connector-subsea-solutions

# PIPELINE LIFTING & HANDLING FRAME

PIPELINE REPAIR &amp; TIE-IN



Folded position for packing and shipping



01 // Pipeline Lifting & Handling Frame mudmat for soft seabed conditions

## INTERFACES

<b>Diver Operation</b>	Powered through hydraulic interface
<b>ROV operated</b>	Compliant with CSS ROV skid and topside control system
<b>ROV Interface Specification</b>	4 Line stab and Receptacle, Ø35, 10k, API 17D (x4)
<b>Max. working pressure</b>	207 bar /3000 psi
<b>Hydraulic oil</b>	Shell Tellus S2 22/32 (typical) NAS8/ISO 4406 19/17/14
<b>Installation</b>	Deck Crane & WROV

## ADDITIONAL INFO

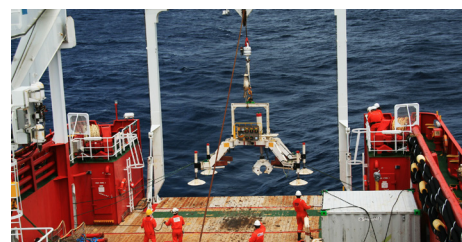
<b>Design codes</b>	DNVGL 2.7-3 Portable offshore units DNVGL-OS-C101 Design of offshore steel structures
<b>Operation Class</b>	DNV 2.7-3 R45-Sxx
<b>Portable Offshore Unit</b>	Type A
<b>Coating</b>	NORSOK 7B, Marine epoxy paint system
<b>Cathodic protection</b>	Yes
<b>Packing</b>	10 ft offshore container, open top required



02 // Factory acceptance testing through remote interface



03 // Tool folded and packed into standard 10ft shipping container ready for transport or storage



04 // Offshore mobilisation and deployment



05 // ROV footage of subsea operation