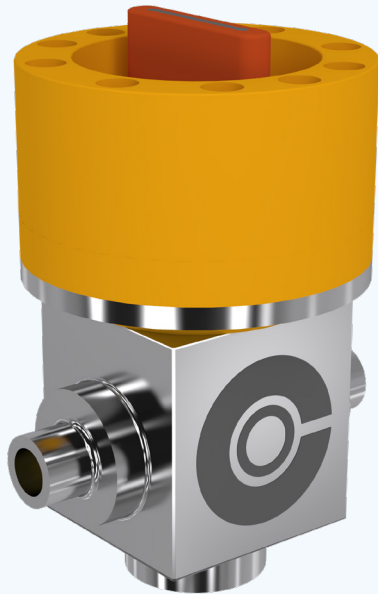


# SMALL BORE BALL VALVES

PRODUCT GROUP  
SUBSEA DISTRIBUTION



## PRODUCT DESCRIPTION

Our ball valves, for ½” to 2” high pressure control systems, are a form of quarter-turn valve which uses a pivoting perforated ball to control flow.

Implementing a unique manufacturing process we are able to weld rather than bolt the components. Not only does this considerably increase the quality and reliability of each unit, but it also significantly reduces the size and weight up to 70% of industry alternatives.

With flexible, modular and interchangeable sealing options we can supply competitive solutions from hydraulic valves to high performance gas applications.

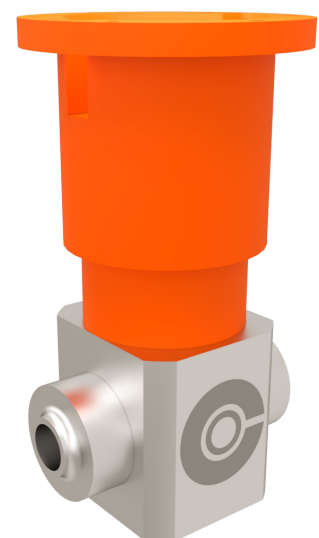
Fully qualified to PSL 3 / 3G, this lightweight and compact solution provides the highest level of safety and assurance, reducing operational risk and cost.

## CAPACITIES

Pipeline size	½” – 2”
Maximum working pressure	Up to 15,000psi
Operating Temperature	-18/ +121 C
Ball Valve Opening position/rotation angle (full open):	90 degree in CW direction
Water depth (m)	3000 m

## DIMENSIONS & WEIGHT

Tool Mass	½” ‘ 5 kg 1” – 30kg 2” – 70kg
-----------	-------------------------------------



# SMALL BORE BALL VALVES

SUBSEA DISTRIBUTION

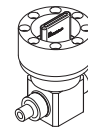


## INTERFACES

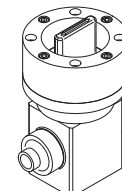
	1/2"	1"	2"
Max. torque ROV manipulator arm:	55 Nm	230 Nm	1100 Nm
Operating Torque:	212 Nm	550 Nm	3600 Nm
ROV Interface	ROV Arm	ROV Arm	ROV Class 4 tool

## ADDITIONAL INFORMATION

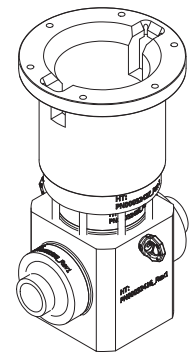
Design codes	API 6A, API 17D
Product Specification Level	PSL 3 / 3G (API 6A)
Ball Valve Material	UNS S32750, Nitronic 50 HS
Flexible Sealing Solutions:	Chevron stack/PEEK (PSL 3), Chevron stack /metal-to-metal (PSL 3G)



1/2"



1"



2"

# ABOUT CONNECTOR SUBSEA SOLUTIONS

COMPLEX CHALLENGES **RELIABLE SOLUTIONS**

Connector Subsea Solutions (CSS) is a technology leading engineering business with a large a portfolio of products and equipment to provide solutions to the Offshore Oil & Gas industry. Since 2000, CSS has supplied novel, reliable and cost-effective solutions for subsea and deepwater projects and has a proven track record from some of the world's most demanding subsea environments.

## OUR RANGE OF SOLUTIONS HAVE BEEN DEVELOPED FROM GROUND UP FOR ROBUST OPERATIONS, AND ARE CHARACTERIZED BY:

- ▶ Lightweight and small footprint
- ▶ Innovative – simple operation, robust and reliable
- ▶ Unique track record for both riser and pipeline repair and tie-in operations



**CONNECTOR SUBSEA SOLUTIONS**

Head office: Kokstadflaten 17, 5257 Kokstad, Norway  
Locations in: Brazil, UK, Croatia & Bosnia

[www.connectorsubsea.com](http://www.connectorsubsea.com) // [mail@connectorsubsea.com](mailto:mail@connectorsubsea.com)

+47 99 70 11 11 // [in](https://www.linkedin.com/company/connector-subsea-solutions) connector-subsea-solutions