

REMOTE RISER CLEANING & INSPECTION

PRODUCT GROUP
CONTINGENCY & RENTAL



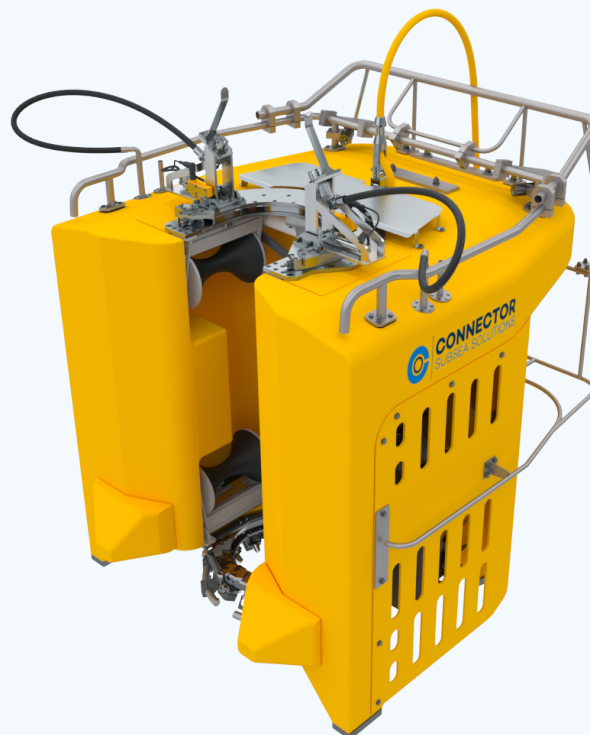
ABOUT THE PRODUCT

Our remote riser cleaning and inspection tool (RCIT) can quickly and safely remove soft and hard forms of sea-growth reducing the adverse dynamic loading conditions and impact of performance and integrity through excess fatigue.

Once positioned on the riser by an ROV, the RCIT is a self-propelled unit that can be remotely operated. This eliminates the need for an ROV to be present, reducing the vessel requirements during operation.

A modular design, the RCIT can be tuned to suit the specific asset, location, sea-growth and inspection method. This flexibility ensures a highly reliable and high quality clean and inspection.

The remote riser cleaning and inspection tool removes divers from the water increasing safety in dangerous congested splash zones. It provides a controlled, reliable operation as part of good riser integrity management.



CAPACITIES

Pipeline Range	4 – 10in (100 – 280mm) OD
Cleaning Type	High power cavitation jets High power turbo jets Driven wire brush
Inspection Type	6 HD Cameras (360-degree view) with integrated LED lights Mounting for alternative passive system
Depth rating	250mwd
Launch & Recovery conditions	Max. 2.5knots

DIMENSION & WEIGHTS

RCIT Dimensions	1,797 x 1,870 x 2,232 mm
Container with Integrated Control Room	6,058 x 2,438 x 2,960 mm
Mass	1,500kg
Weight in Air	14,710 N (1,500 kgf)
Weight submerged	490 N (50 kgf)



CONNECTOR SUBSEA SOLUTIONS

Head office: Kokstadflaten 17, 5257 Kokstad, Norway
 Locations in: Brazil, UK, Croatia & Bosnia

www.connectorsubsea.com // mail@connectorsubsea.com

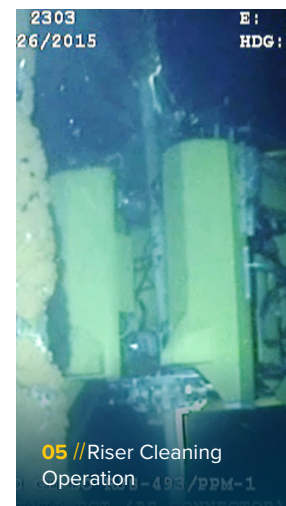
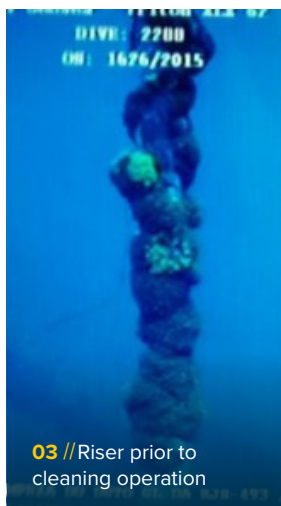
+47 99 70 11 11 // [in](https://www.linkedin.com/company/connector-subsea-solutions) connector-subsea-solutions

REMOTE RISER CLEANING & INSPECTION | CONTINGENCY & RENTAL



INTERFACES

Power Requirement	Input voltage: 440 VAC / NN A, 60 Hz (3-phase)
Remote Control System	6 separate video outputs, ethernet network, remote winch control
HPU/ Hydraulic System	207 bars / 3,000 psi working pressure. Digital control of hydraulic valve pack.
Integrated Deployment Winch	MacArtney Cormac M-Series. 300 m umbilical. Maximum speed: 15 m/min.
Umbilical	Power transmission (990/110 VAC), optical video/ control signal transmission
Traction	4 hydraulically driven, rubber coated wheels 4 interchangeable wheel sets to cover various pipeline ODs



CONNECTOR SUBSEA SOLUTIONS

Head office: Kokstadflaten 17, 5257 Kokstad, Norway
Locations in: Brazil, UK, Croatia & Bosnia

www.connectorsubsea.com // mail@connectorsubsea.com

+47 99 70 11 11 // [connector-subsea-solutions](https://www.linkedin.com/company/connector-subsea-solutions)