

# REMOTE CLAMP & CONNECTOR INSTALLATION FRAMES

PRODUCT GROUP  
PIPELINE REPAIR  
& TIE-IN

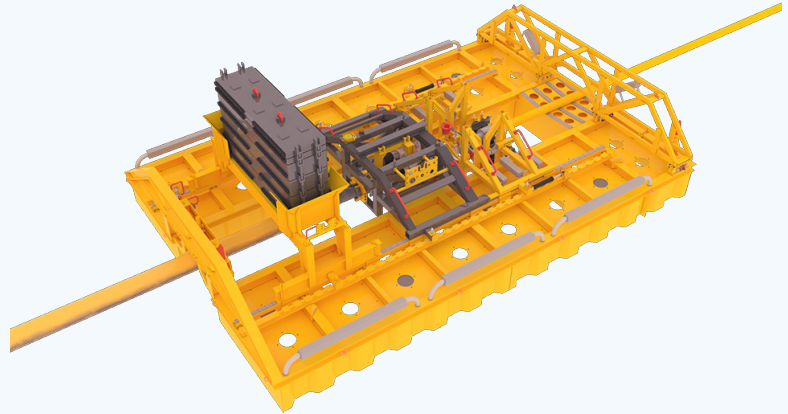


## PRODUCT DESCRIPTION

To instigate a pipeline repair subsea it is critical the clamp or connector is correctly aligned and supported prior to activation. In diver installed applications this is easily achieved through buoyancy and rigging, however, in remote operation specific installation solutions need to be deployed in order to achieve reliable, repeatable and controlled operation.

Our remote clamp and connector installation frames are designed specifically for the repair location – considering the seabed and environmental conditions, repair type, size, weight and tolerance of the connectors or clamps and mobilization capability of the vessels.

This bespoke engineering is based on over 30 years of remote repair track record which provides the highest level of reliability, safety and control. Our optimized approach delivers commercial solutions to the world's harshest environments.



## CAPACITIES

Pipeline size	1/2in to 48in
Water depth	3000m
Orientation	Horizontal through to vertical
Frame type	Trolley – supporting from beneath Frame – supporting from above
Connector/Clamp Interface	Can be used with most repair units in the market Qualified for MORGRIP tolerances based on DNV-GL Type Approval for permanent subsea pipeline repair

*All applications are a bespoke engineered solution based on operator requirements.*

## INTERFACES

Diver Operated	Powered through hydraulic interface
ROV operated	Compliant with CSS ROV skid and topside control system
Installation	Installation Deck Crane & WROV

For more information on this and related products, visit us at:  
[www.connectorsubsea.com](http://www.connectorsubsea.com)



### CONNECTOR SUBSEA SOLUTIONS

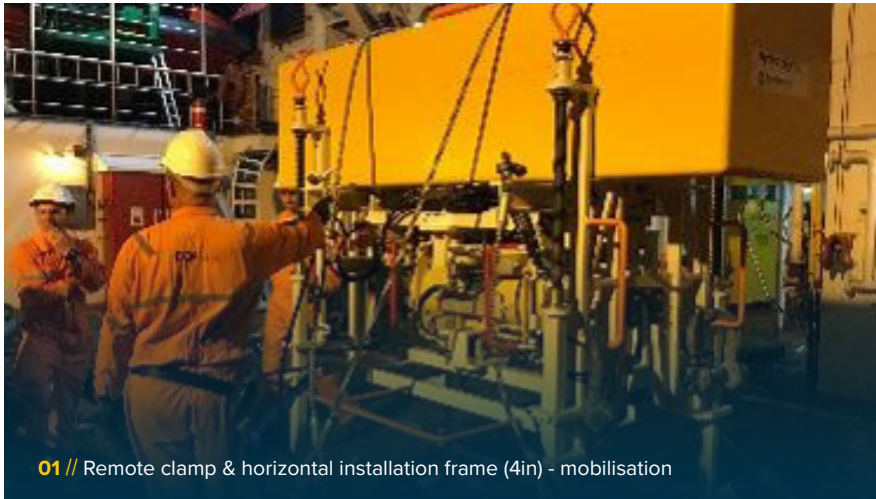
Head office: Kokstadflaten 17, 5257 Kokstad, Norway  
 Locations in: Brazil, UK, Croatia & Bosnia

[www.connectorsubsea.com](http://www.connectorsubsea.com) // [mail@connectorsubsea.com](mailto:mail@connectorsubsea.com)

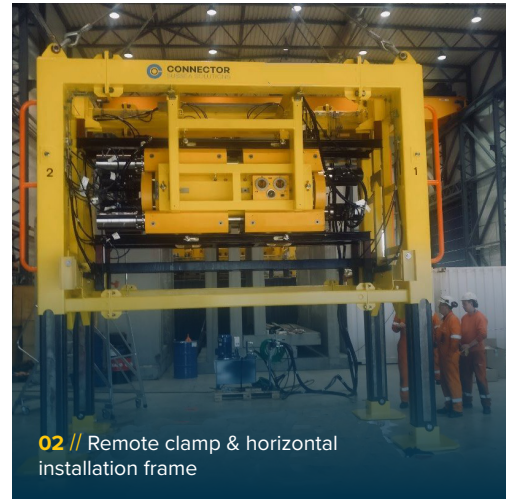
+47 99 70 11 11 // [in](https://www.linkedin.com/company/connector-subsea-solutions) connector-subsea-solutions

# REMOTE CLAMP & CONNECTOR INSTALLATION FRAMES

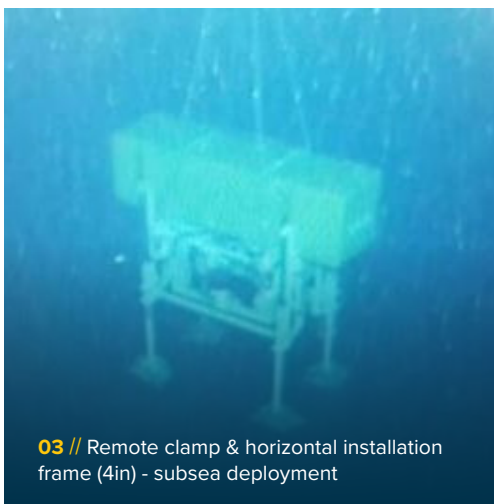
PIPELINE REPAIR & TIE-IN



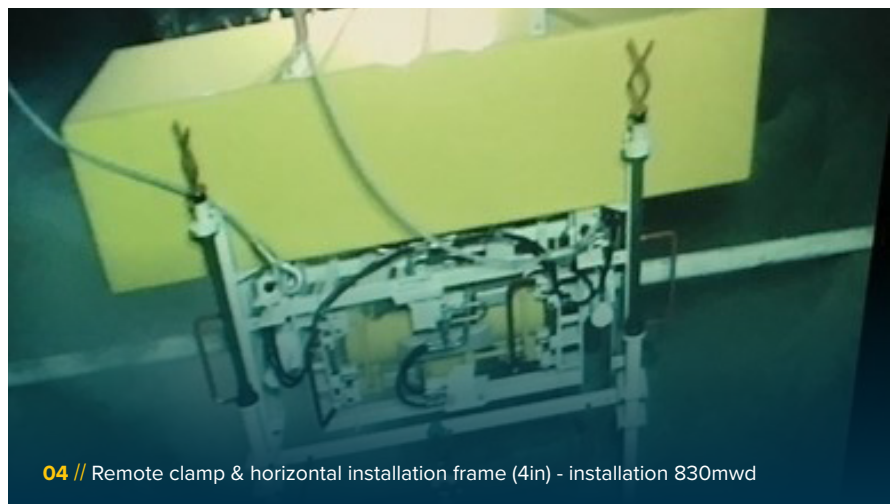
01 // Remote clamp & horizontal installation frame (4in) - mobilisation



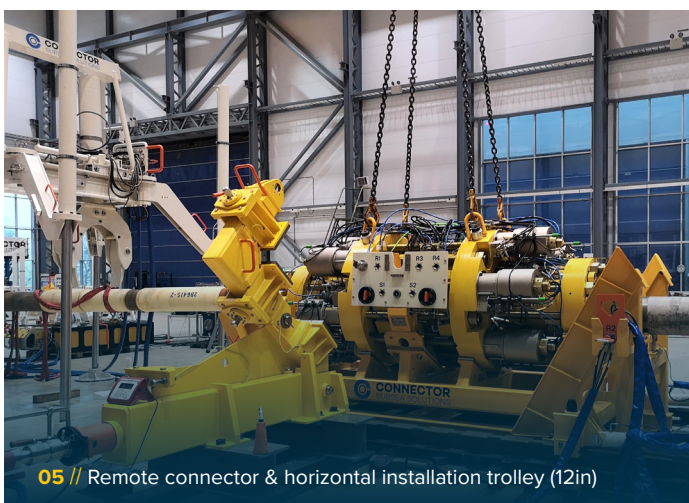
02 // Remote clamp & horizontal installation frame



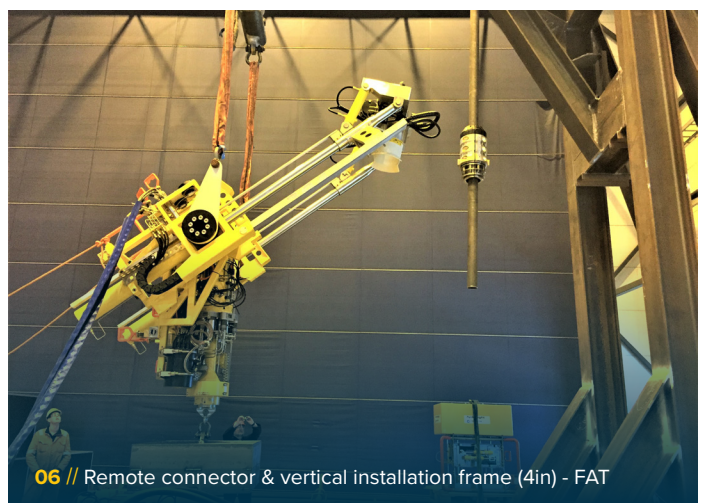
03 // Remote clamp & horizontal installation frame (4in) - subsea deployment



04 // Remote clamp & horizontal installation frame (4in) - installation 830mwd



05 // Remote connector & horizontal installation trolley (12in)



06 // Remote connector & vertical installation frame (4in) - FAT



**CONNECTOR SUBSEA SOLUTIONS**

Head office: Kokstadflaten 17, 5257 Kokstad, Norway  
Locations in: Brazil, UK, Croatia & Bosnia

[www.connectorsubsea.com](http://www.connectorsubsea.com) // [mail@connectorsubsea.com](mailto:mail@connectorsubsea.com)

+47 99 70 11 11 // [connector-subsea-solutions](https://www.linkedin.com/company/connector-subsea-solutions)