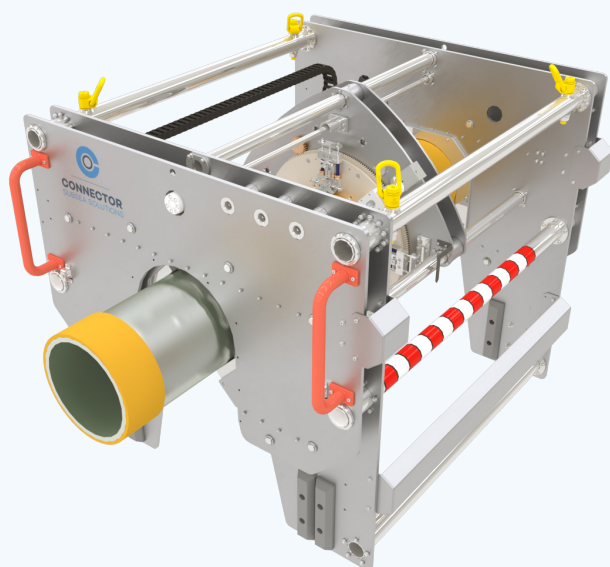


PIPELINE COATING REMOVAL TOOLS

PRODUCT GROUP

PIPELINE REPAIR & TIE-IN



PRODUCT DESCRIPTION

Our Pipeline Coating Removal Tool enables the removal of all coatings including FBE, without any risk to damaging the parent pipeline. This assurance is critical when using the exposed pipe as an interface for subsea intervention.

Deploying a patented cutting head technology, the tool can follow the contour of the pipe regardless of pipeline tolerances and ovality, providing full assurance that all coating is removed. A separate module can remove the weld bead if necessary.

Suitable for both horizontal and vertical application, the tool is light weight and easy to mobilize.

As a fully remote system the tool ensures safe, reliable, controllable and efficient subsea operation up to 3000mwd while also providing the very best possible surface finish which is qualified for use with MORGRIP Clamps and Connectors.

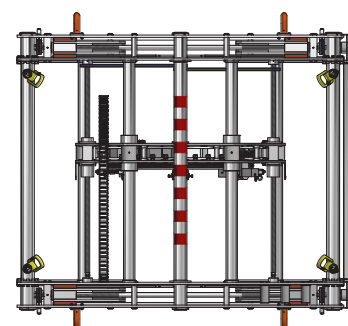
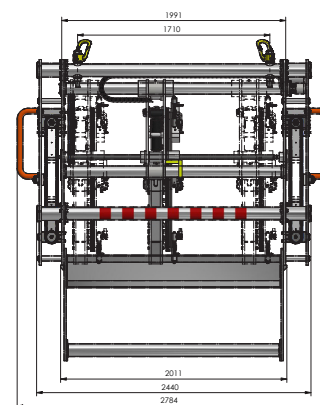
CAPACITIES

Pipeline size	4-14in
	10-20in
	18-36in
Axial stroke (length of coating removal)	1300 mm
Radial stroke (dept of coating removal)	35 mm
Allowable slope for operation	30 deg
Water depth (m)	3000 m

DIMENSIONS & WEIGHT

Dimensions (HxWxD)	4-14in: 1,7 x 1,6x 2,7 m
	10-20in: 2,0 x 2,1 x 2,7 m
	18-36in: 2.8 x 2.9 x 3.0 m
Mass of Tool	4-14in: 1445 kg
	10-20in: 1926 kg
	18-36in: 3154 kg

Continued on next page >>



CONNECTOR SUBSEA SOLUTIONS

Head office: Kokstadflaten 17, 5257 Kokstad, Norway
 Locations in: Brazil, UK, Croatia & Bosnia

www.connectorsubsea.com // mail@connectorsubsea.com

+47 99 70 11 11 // [in](https://www.linkedin.com/company/connector-subsea-solutions) connector-subsea-solutions

PIPELINE COATING REMOVAL TOOLS

PIPELINE REPAIR & TIE-IN



DIMENSIONS & WEIGHT (CONTINUED)

Weight of tool in air	4-14in:	14 176N (1445 kgf)
	10-20in:	18 894N (1926 kgf)
	18-36in:	30 941N (3154 kgf)
Submerged weight of tool	4-14in:	11 503N (1142 kgf)
	10-20in:	14 637N (1492kgf)
	18-36in:	23 093N (2354 kgf)

INTERFACES

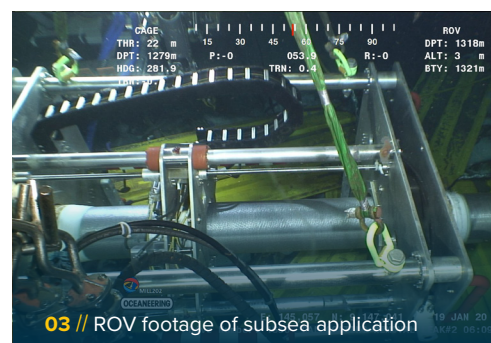
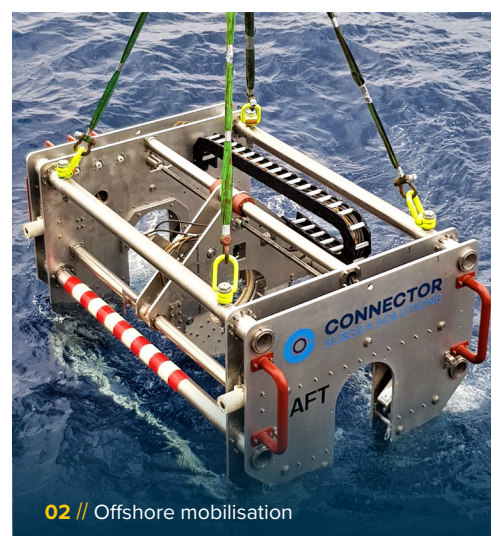
ROV operated	Yes, compliant with CSS ROV skid and topside control system
ROV Interface Specification	4 Line stab and Receptacle, Ø35, 10k, API 17D (x3)
Max. working pressure	207 bar /3000 psi
Flow	>38 l/min
Hydraulic oil	Shell Tellus S2 22/32 (typical) NAS8/ISO 4406 19/17/14
ROV grabber bars	Yes
Lifting points	Eye bolt w/swivel WLL 5/8 t (4 pcs.) on tool frame Supplied with wire rope sling w/master link WLL 3,5t 30o DNVGL-ST-E271 Installation Heave Compensated Deck Crane & WROV

ADDITIONAL INFORMATION

Design code	DNVGL 2.7-3 Portable offshore units DNVGL-OS-C101 Design of offshore steel structures
Operation Class	DNV 2.7-3 R60-Sxx
Buoyancy application	Yes. Note that buoyancy is not delivered with tool
Coating	NORSOK 7B, Marine epoxy paint system
Cathodic protection	Yes
Packing	Container

For more information on this and related products, visit us at:

www.connectorsubsea.com



CONNECTOR SUBSEA SOLUTIONS

Head office: Kokstadflaten 17, 5257 Kokstad, Norway
Locations in: Brazil, UK, Croatia & Bosnia

www.connectorsubsea.com // mail@connectorsubsea.com

+47 99 70 11 11 // [in](https://www.linkedin.com/company/connector-subsea-solutions) connector-subsea-solutions