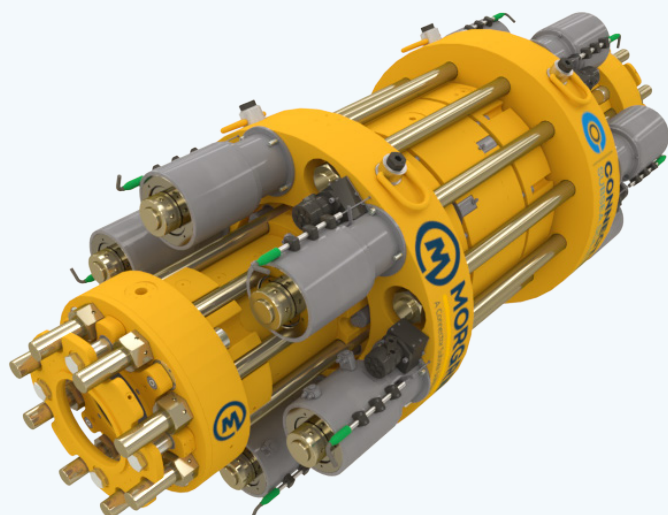


REMOTE CONNECTORS

PRODUCT GROUP MORGRIP CLAMPS & CONNECTORS



PRODUCT DESCRIPTION

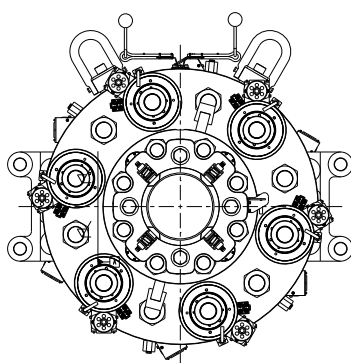
MORGRIP Subsea Remote Connectors enable subsea pipelines to be joined or terminated in a hub/flange or end cap, in locations that are difficult or impossible to reach by divers.

Developed to be installed remotely, our connectors are field proven throughout the world and we are the only supplier with relevant track record having supplied 95% of all in-service units.

A DNV-GL Type Approved Product, the MORGRIP enables a certified permanent repair for a wide range of pipe materials, pressures, diameters and temperatures.

The unique gripping and sealing technology ensures a connection that is at least as strong as the pipe itself, outperforming quality welds in fatigue loading.

With over 90 remote units supplied since the 1980's providing a 100% success during infield operation, MORGRIP holds the industry records for highest pressure, deepest water location, largest pipe diameter and is the only unit deployed in a vertical riser application at 1350mwd.



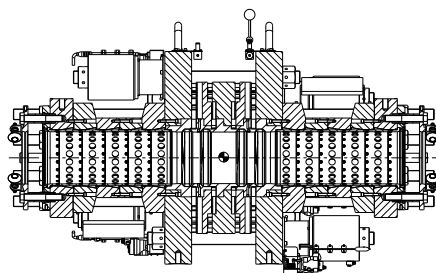
CAPACITIES

Pipeline size	1/2in to 42in
Material	Carbon steels, stainless steels, duplex steels
Temperature	-40degC to 250degC
Working Pressure	Up to and including ANSI 2500 rating (638bar test pressure)

For applications outside of this scope, bespoke engineered solutions are available.

INTERFACES

Activation	Single activation with remote bolt tensioners
Gripping Technology	Collet or ball & taper
Seal Material	Dual graphite
Back Seal Pressure Test	Yes
Installation	Remote installation & activation frames



CONNECTOR SUBSEA SOLUTIONS

Head office: Kokstadflaten 17, 5257 Kokstad, Norway
Locations in: Brazil, UK, Croatia & Bosnia

www.connectorsubsea.com // mail@connectorsubsea.com

+47 99 70 11 11 // [in](https://www.linkedin.com/company/connector-subsea-solutions) connector-subsea-solutions

REMOTE CONNECTORS

MORGRIP CLAMPS & CONNECTORS



ADDITIONAL INFO

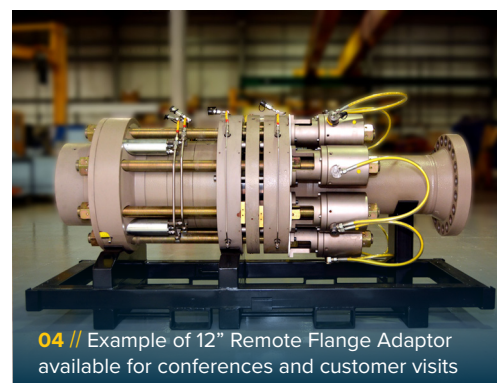
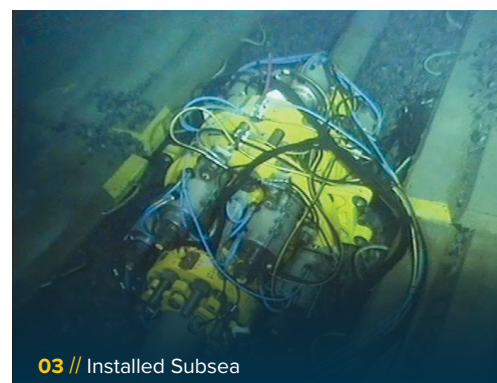
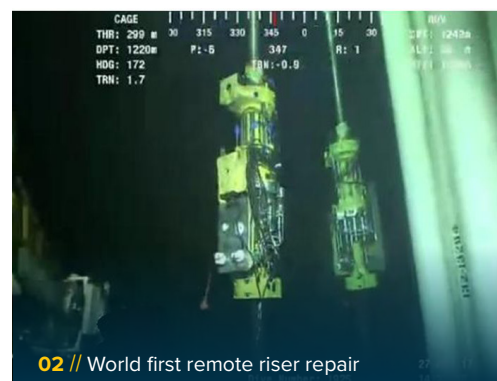
Design code	DNVGL-ST-F101/ F113 Pipeline Repair ASME BPVC VIII Div.1 ASME B31.3 API 5L Linepipe specification ASME BPVC VIII Div.2 on request
Coating	Jotamastic 87, Interzone 954 or NORSOK M-501 System 7C & 7B Compliant
Maintenance	Not required post installation
Packing	Steel assembly & shipping frames
Design Life	40 years

TRACK RECORD

Our full remote installation history as of August 2020.

1996	Halten Pipe	2off 16" MORGRIP 190Barg Remote Couplings
1996	YME Pipe	1off 4" MORGRIP 170Barg Remote Coupling
2002	Snorre Vigdis Riser	1off 12" MORGRIP 285Barg Remote Coupling
2009	Kvitebjorn Pipeline	2off 28" MORGRIP 178Barg Remote Couplings
2010	Troll C Manifold	1off 6" MORGRIP 340Barg End Cap (Duplex)
2015	Gulfaks Pipeline	1off 12" MORGRIP 389Barg Remote Coupling (Duplex)
2017	Greater Plutonia Hybrid Riser	2off 4" MORGRIP 334Barg Remote Flange Adaptors
2017	Snorre Vigdis	2off 16" MORGRIP 120Barg Remote Couplings
2017	Snorre Vigdis	1off 12" MORGRIP 251Barg Remote Coupling
2018	Asgard	1off 10" MORGRIP 440Barg Remote Coupling (Duplex)
2018	Snorre A	2off 8" MORGRIP 200Barg Remote Couplings

For more information on this and related products, visit us at:
www.connectorsubsea.com



CONNECTOR SUBSEA SOLUTIONS

Head office: Kokstadflaten 17, 5257 Kokstad, Norway
 Locations in: Brazil, UK, Croatia & Bosnia

www.connectorsubsea.com // mail@connectorsubsea.com

+47 99 70 11 11 // [in](https://www.linkedin.com/company/connector-subsea-solutions) connector-subsea-solutions